

Triumph®

by IDEAL

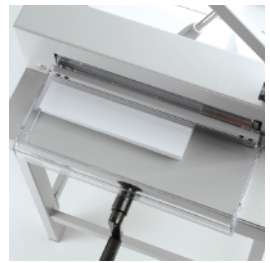
→ 4205 MANUAL CUTTER

"SCS" (Safety Cutting System) package: hinged, transparent safety guard on front table (locks automatically while cutting); transparent safety cover on rear table; safety catch (locks blade lever in up position); blade change from front without removing machine covers; blade changing device covers cutting edge of blade; blade depth adjustment from outside of machine; cutting stick can be turned or changed from outside of machine | compact size | Solingen steel blade | solid steel blade carrier and adjustable blade guides | extra large cut lever requires minimal effort | patented, lever-activated, fast-action clamp | side guide with measuring scale | spindle-guided back gauge with calibrated crank and measuring scale | all-metal construction | optional stand (shown)

Dimensions (D x W x H): 32 ¾ x 34 ¾ x 15 ¾ inches
(43 H with stand), Shipping weight: 115 lbs. (141 with stand)



LOCKING SAFETY GUARD



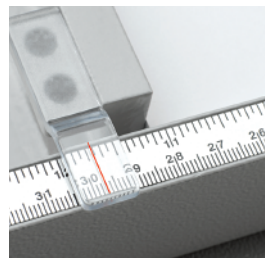
The hinged front safety guard locks in the lowered position during cutting process.

EASY CUTTING STICK CHANGE



Cutting sticks can be turned or changed from outside of machine.

BACK GAUGE AND SIDE GUIDE



Accurate, cast aluminum back gauge and side guide allow precise paper alignment.

→ TRIUMPH 4205

| | |
|--------------------------------|---------|
| Cutting width | 16 7/8" |
| Cutting height | 1 1/2" |
| Narrow cut | 1 5/16" |
| Cutting length behind blade | 15 5/8" |
| Table length in front of blade | 9" |

Dealer:

MBM
CORPORATION

3134 Industry Drive
North Charleston, South Carolina 29418
800-223-2508, fax: 843-552-2974
www.mbmcorp.com

IDEAL.MBM
CORPORATION

1 Regan Road, unit 12
Brampton, Ontario L7A 1B8
800-387-2528, fax: 905-840-1114
www.ideal-mbm.com

E.G. Brennan & Co., LLC

16116 Runnymede Street
Van Nuys, Ca. 91406

Phone: (818) 997-8061 Fax (818) 786-9165

All technical data is approximate and subject to change. © MBM Corporation, 10/2007.